

# MALI

4 Bedroom/5 Bath

206.88m2 or 2,227 SF



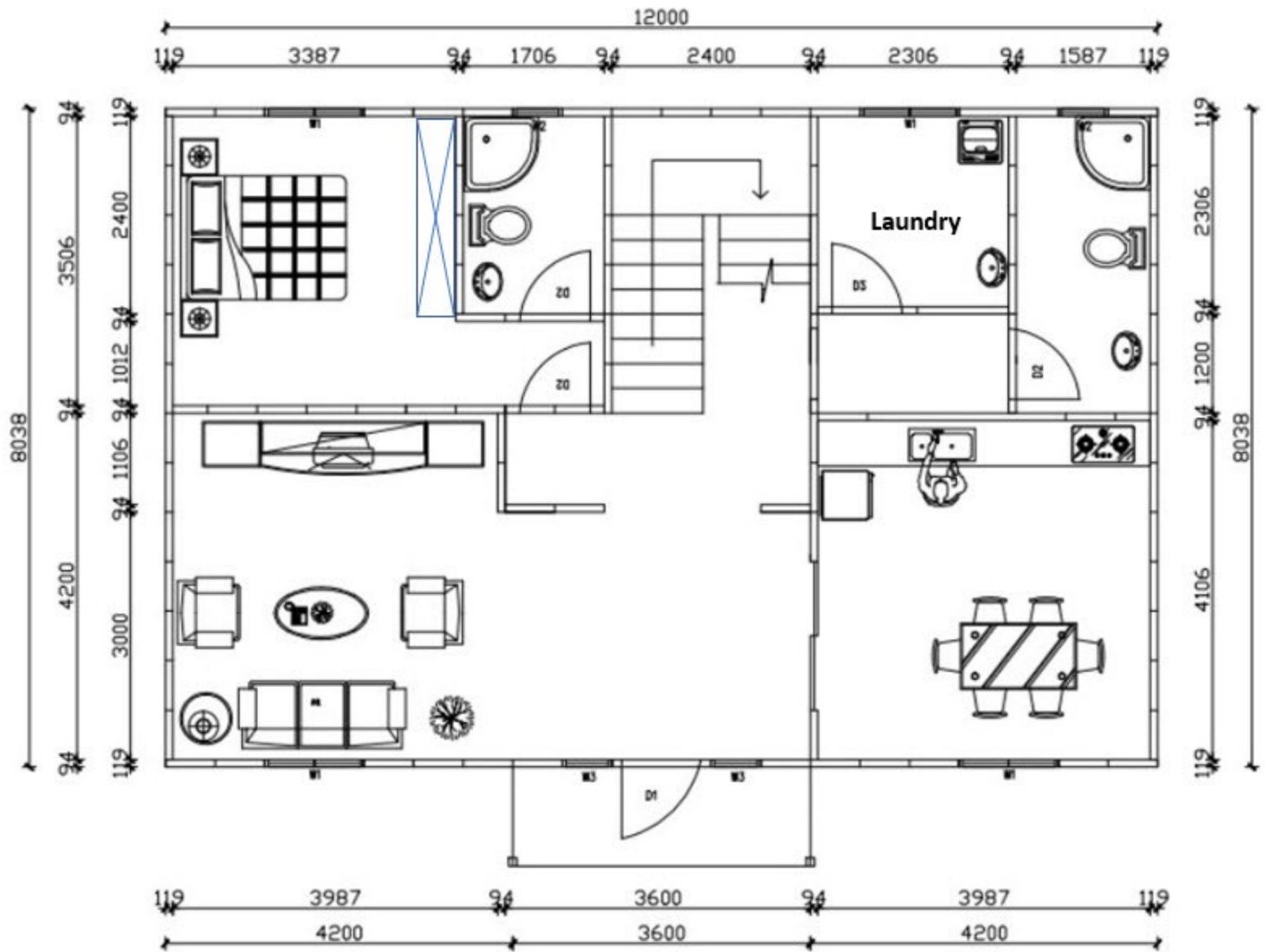
pan**L**bilt GLOBAL

[www.PanLbilt.com](http://www.PanLbilt.com)

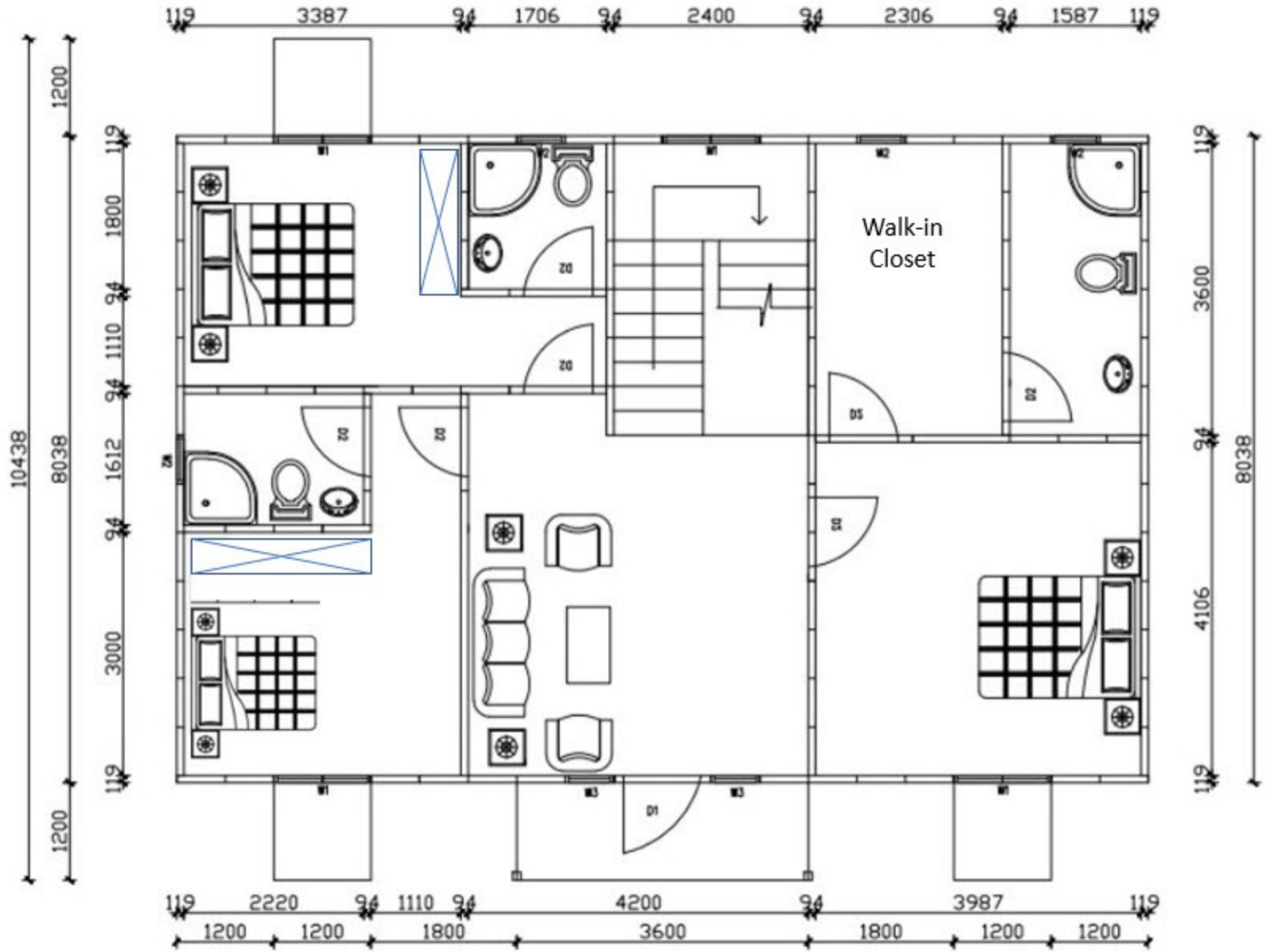
224-425-9236

Contact: Allan M. Olbur [allano@PanLbilt.com](mailto:allano@PanLbilt.com)





39.37 feet



**SPECIAL OFFER**

**KIT PRICE..... Call for  
Quote**

FOB QINGDAO, China

Terms: 50% Deposit  
with Purchase Order/

**PanLbilt Steel and Foam Cement Panel Construction Kit Includes:**

- ⇒ Exterior/Interior Walls
- ⇒ Electrical & Water Pipes inserted into walls
- ⇒ Doors & Aluminum Alloy Windows
- ⇒ Asphalt Shingle Roof Panel
- ⇒ Double PVC and Gypsum Board Ceiling
- ⇒ Ceramic Tile for Bedroom and Living Room
- ⇒ Anti-slip tile for Bathrooms
- ⇒ Wainscoting for Wall Panels
- ⇒ Emulsion Paint for External and Internal Wall Panels
- ⇒ Packing in 2-40 foot containers & 1-20 foot container

**OPTIONAL ITEMS:**

**Flooring, Cabinets, Plumbing Fixtures, etc. provided Upon Request**

**panLbilt** GLOBAL