

# LINCOLN

**2 Bedroom, 4 Flats/Floor, 5 Story Building**

**Steel Frame Construction 1603.75m<sup>2</sup>/17,262.62 SF Overall Building Footprint**



[www.PanLbilt.com](http://www.PanLbilt.com)

310-720-7226

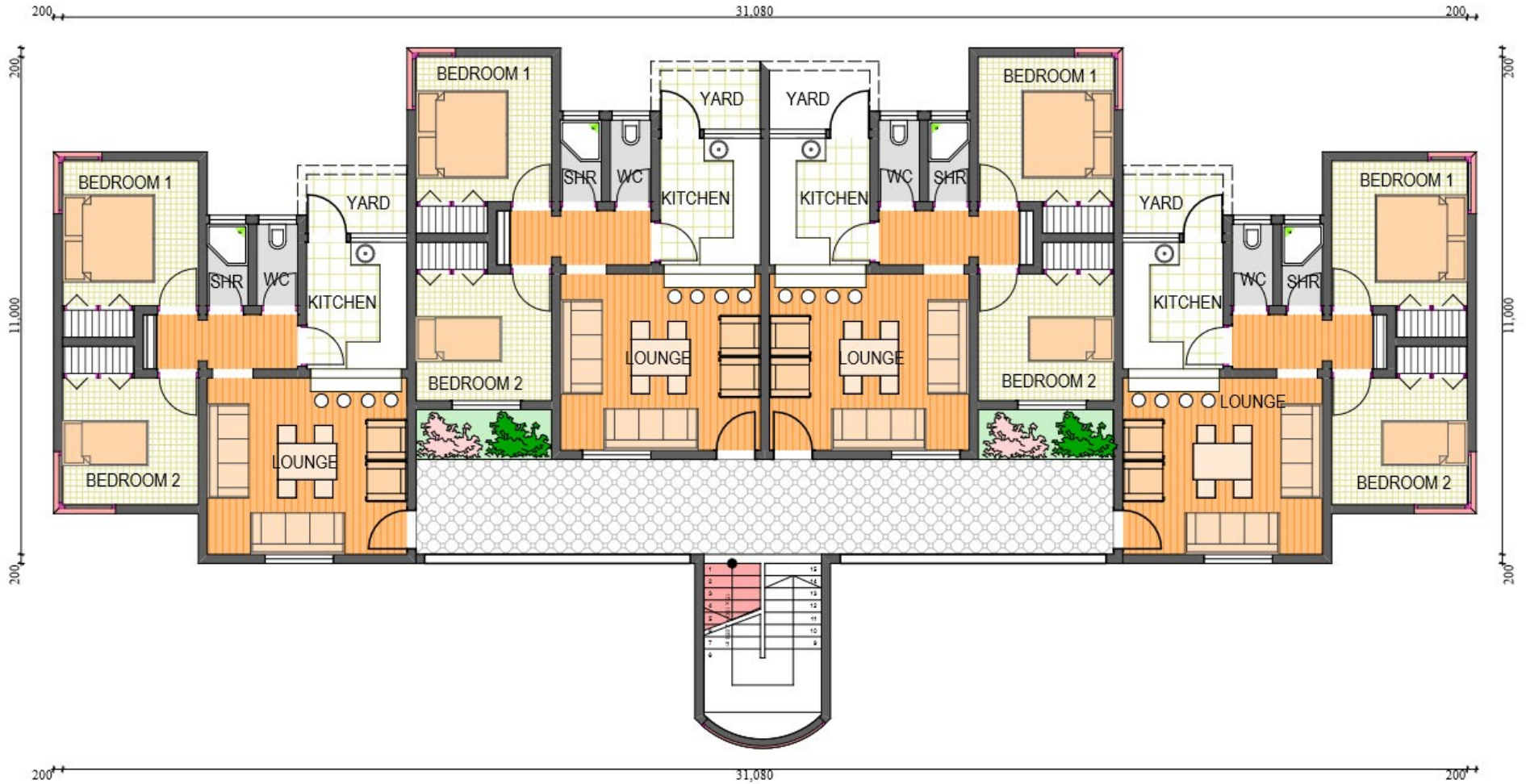
Contact: Raphael Levy [raphael@PanLbilt.com](mailto:raphael@PanLbilt.com)

**panLbilt** GLOBAL

# LINCOLN

2 Bedroom, 4 Flats/Floor, 5 Story Building

## Floorplan



# KENNEDY

**3 Bedroom, 4 Flats/Floor, 5 Story Building**

**2381.13m<sup>2</sup>/25,630.27 SF Overall Building Footprint**



# KENNEDY

3 Bedroom, 4 Flats/Floor, 5 Story Building

## Floorplan



# KENNEDY

## 3 Bedroom, 4 Flats/Floor, 5 Story Building

### Frequently Asked Questions

1. Just to confirm, each building quoted is 5 stories tall and contains 4 flats per floor, correct?

Confirmed.

2. From receipt/confirmation of order, what is the time to build in the factory?

Design: 4 weeks, manufacturing: 6 weeks

3. What is the cost to bring one of your engineers to construction site to supervise the erection of the building?

Cost of supervision is included in the quotation.

4. How long do you estimate it will take to assemble the building?

7-8 months for one building.

5. How many construction workers do you recommend?

40-50 workers for one building.