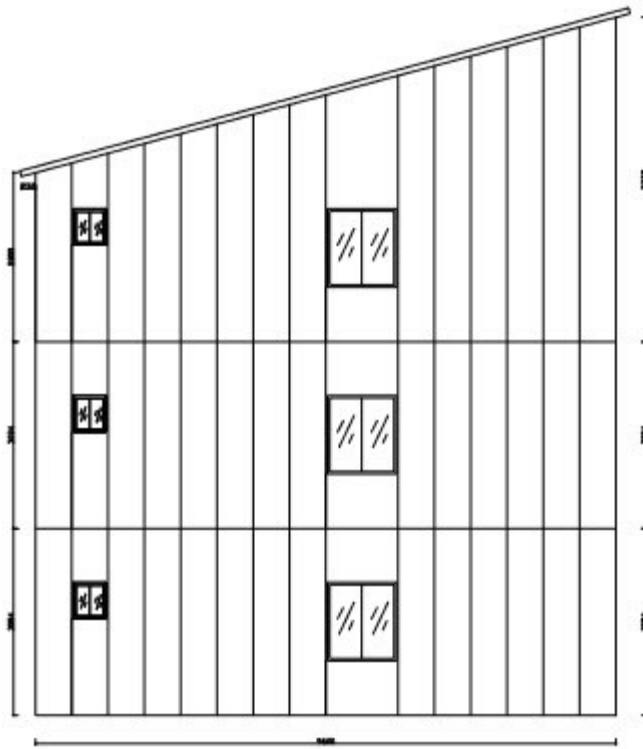


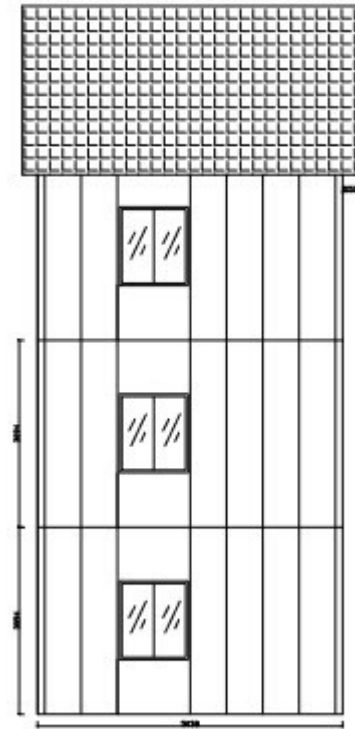
# DURHAM

50.96m<sup>2</sup> or 548.5 SF Per Flat

## 3 Floor Stackable Houses



Front Elevation



Left Elevation

pan**L**bilt GLOBAL

[www.PanLbilt.com](http://www.PanLbilt.com)

224-425-9236

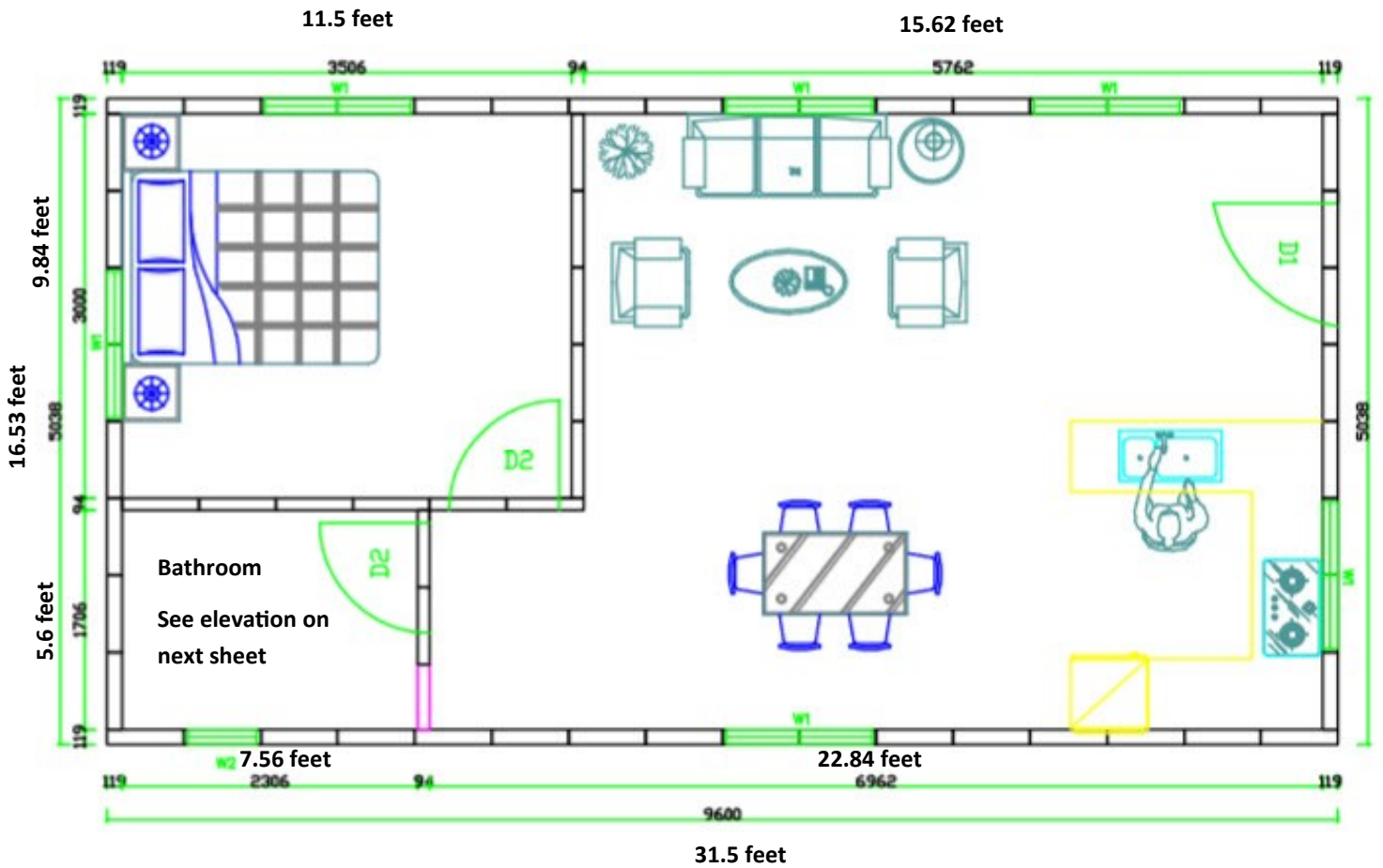
Contact: Allan M. Olbur

[allano@PanLbilt.com](mailto:allano@PanLbilt.com)

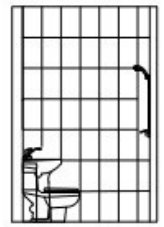
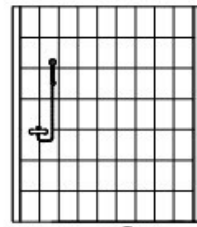
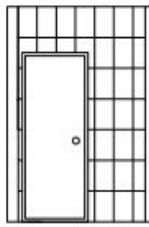
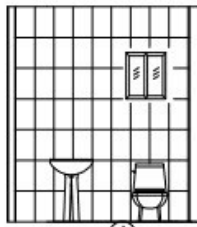
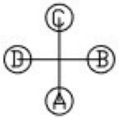
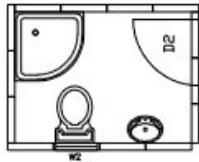


# DURHAM FLOOR PLAN

50.96m<sup>2</sup> or 548.5 SF Per Flat

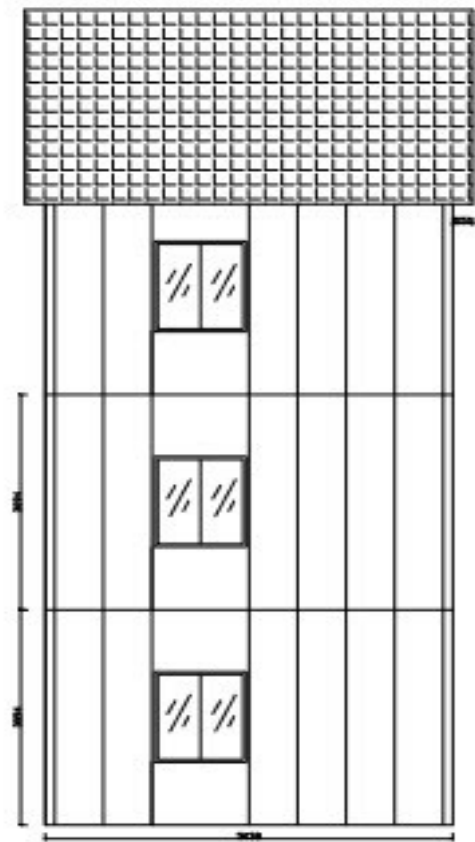


# BATHROOM ELEVATION





Front Elevation



Left Elevation

# SPECIAL OFFER

## **PanLbilit Steel and Foam Cement Panel Construction Kit Includes:**

- ⇒ Exterior/Interior Walls
- ⇒ Electrical & Water Pipes inserted into walls
- ⇒ Doors & Aluminum Alloy Windows
- ⇒ Asphalt Shingle Roof Panel
- ⇒ Double PVC and Gypsum Board Ceiling
- ⇒ Ceramic Tile for Bedroom and Living Room (optional)
- ⇒ Anti-slip tile for Bathrooms (optional)
- ⇒ Wainscoting Wall Panels
- ⇒ Emulsion Paint for External and Internal Wall Panels
- ⇒ Exterior Stairs

**KIT PRICE..... \$ Call for quote**

**FOB QINGDAO, China**

**Terms: 50% Deposit with Purchase Order/50% at Ready to Ship**

### **OPTIONAL ITEMS:**

**Flooring, Cabinets, Plumbing Fixtures, etc. provided Upon Request**

**panLbilit** GLOBAL